

WSP™ Self-Primer Pump

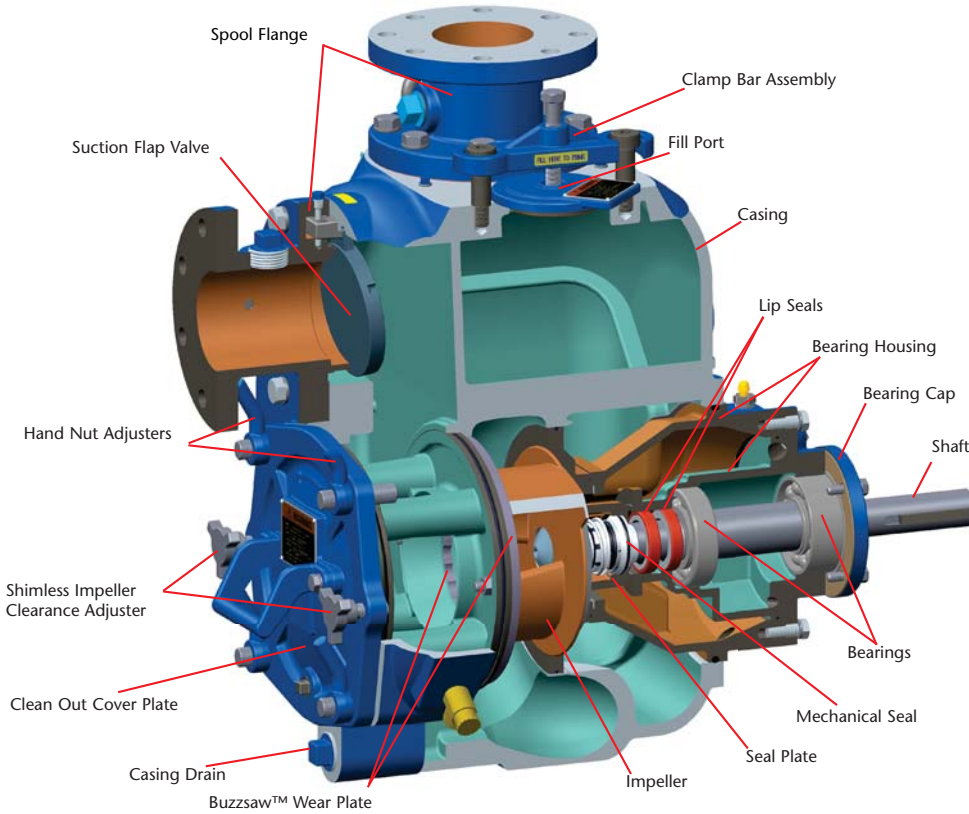
Solids Handling Self-Primer Pumps



Excellent
Engineering
Solutions



3-WSP • 3 inch (75 mm)
Head to 112 ft (34 m) & Flow to 450 gpm (102 m³/hr)



Optional Equipment and Materials

- Hi-Chrome, CD4MCu fitted
- Automatic air release valve
- 120V/240V casing heater
- High pump temperature shutdown kit
- Gauge kit
- NPT & DIN suction and discharge flanges
- Other elastomers available
- TC/TC seal faces

Seal Specifications

- Mechanical oil-lubricated
- Double floating
- Self-aligning
- Silicone carbide rotating and stationary faces
- Stainless steel metal components

Maximum temperature of liquid pumped
180°F/83°C.

Note: Consult factory for applications exceeding maximum pressure and/or temperature indicated.

| Pump Size | | 3 x 3 in (75 x 75 mm) ANSI/DIN | |
|--------------------|--|---------------------------------|---|
| Pump Casing | Ductile iron <ul style="list-style-type: none"> • Twice as strong as CI • Higher bursting pressure than CI • Longer wear life than CI | Impeller | Open type, two vane Material: cast steel Max Solids Sphere: 2.5 in (63.5 mm) <ul style="list-style-type: none"> • Less brittle than Ductile Iron |
| Operating Pressure | Maximum 120 psi (827 kPa) | Impeller Shaft | 17-4PH* SST <ul style="list-style-type: none"> • High strength • Corrosion resistance |
| Thrust Bearing | Open single ball | Bearing/Seal Cavity Lubrication | SAE No. 30 oil |
| Flanges | 125# Cast iron ANSI or DIN | Gaskets | Buna-N, compressed synthetic fibers, vegetable fiber, PTFE, cork, and rubber |
| Wear Plate | Replaceable Carbon steel | O-Rings | Buna-N |
| Cover Plate | Removable/adjustable Ductile iron | Hardware | Plated steel/SST |
| Flap Valve | Neoprene with steel reinforcing ring | Pressure Release Valve | Brass |
| Bearing Housing | Ductile iron | Oil Level Sight Gauges | Bearing and seal cavity |
| Seal Plate | Cast iron | Net Weight | 490 lbs (222 kg) |
| Shaft Sleeve | 17-4PH* SST | Shipping Weight | 545 lbs (250 kg) |
| Radial Bearing | Open single ball | Export Crate | 25 ft ³ (0.7 m ³) |

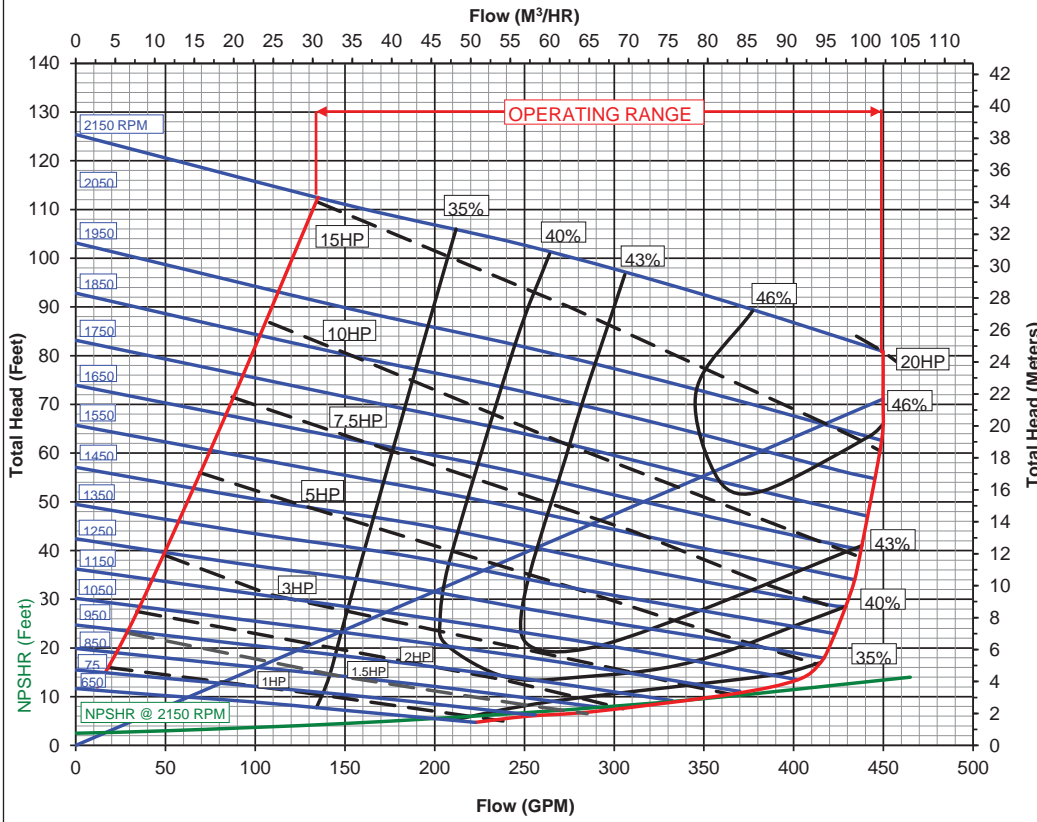
WSP™ Self-Primer Pump

Solids Handling Self-Primer Pumps

3 x 3 in. (75 x 75 mm) curve



440 W. 800 S. Salt Lake City, Utah 84110
Phone: (801) 359-8731 Fax: (801) 355-9303



Suction: 3"
Discharge: 3"
Impeller Diameter: 8.75"
Max. Solid Sphere: 2.50"

| REPRIMING LIFTS | |
|-----------------|------|
| RPM | FEET |
| 650 | 5 |
| 750 | 6 |
| 850 | 8 |
| 950 | 10 |
| 1050 | 13 |
| 1150 | 16 |
| 1250 | 18 |
| 1350 | 19 |
| 1450 | 20 |
| 1550 | 21 |
| 1650-1750 | 22 |
| 1850-2150 | 25 |

Determine NPSHR prior to using repriming table. Do not use available suction lifts.

Clear Water Performance

$$BHP = \frac{GPM \times FT \times SG}{3960 \times \text{Efficiency}}$$

$$KW = \frac{M^3 / HR \times M \times SG}{367 \times \text{Efficiency}}$$



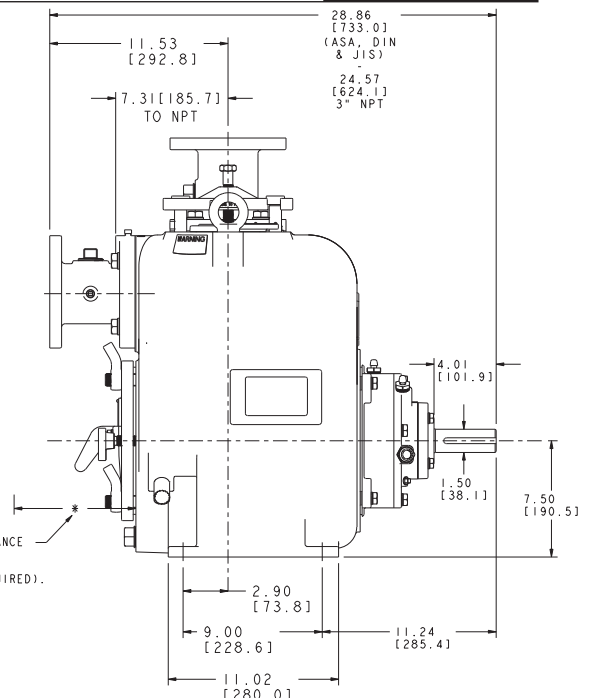
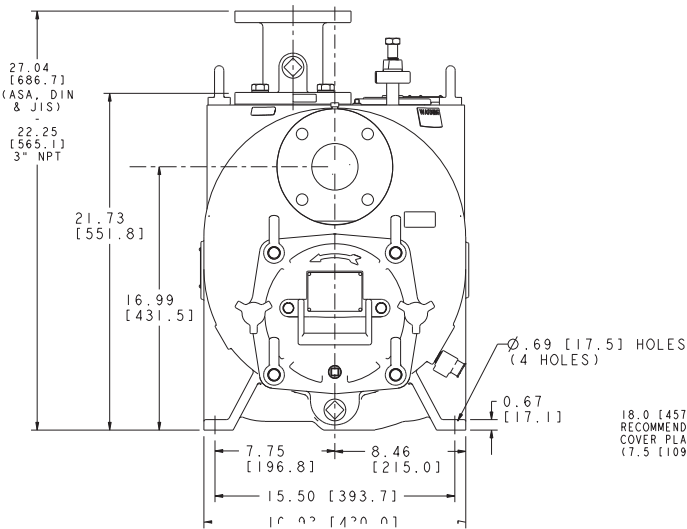
© Copyright All rights reserved 2002

Certified tests are performed using Hydraulic Institute acceptance level B.

November 2014

**RPM
VARIABLE**

3-WSP



Weir Specialty Pumps

440 West 800 South
P.O. Box 209 (84110-0209)
Salt Lake City, UT 84101
USA

Tel: 1 801 359 8731
Fax: 1 801 530 7828
email: info@weirsp.com
www.weirsp.com



281-612-WRXS (9797)

Excellent
Engineering
Solutions

