

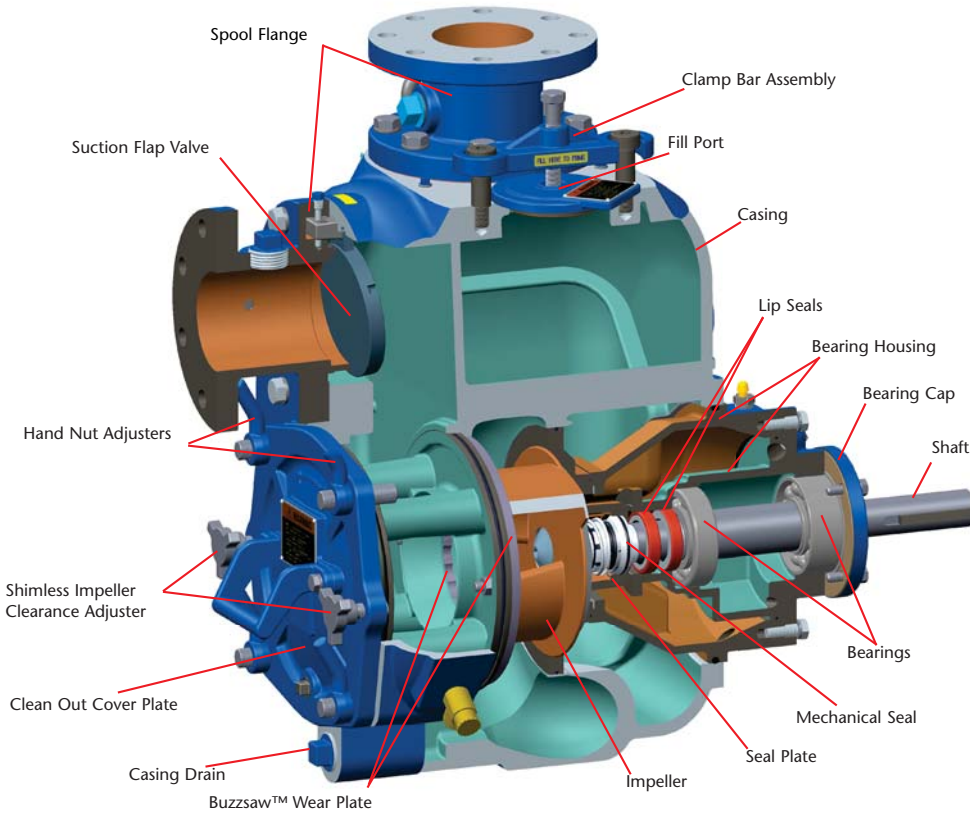
# WSP™ Self-Primer Pump

Solids Handling Self-Primer Pumps



Excellent Engineering Solutions

**2-WSP • 2 inch (50 mm)**  
Head to 103 ft (31 m) & Flow to 225 GPM (51 m<sup>3</sup>/hr)



### Optional Equipment and Materials

- CD4MCu fitted
- Automatic air release valve
- 120V/240V casing heater
- High pump temperature shutdown kit
- Gauge kit
- NPT & DIN suction and discharge flanges
- Other elastomers available
- TC/TC seal faces

### Seal Specifications

- Mechanical oil-lubricated
- Double floating
- Self-aligning
- Silicone carbide rotating and stationary faces
- Stainless steel metal components

Maximum temperature of liquid pumped  
180°F/83°C.

*Note:* Consult factory for applications exceeding maximum pressure and/or temperature indicated.

Pump Size	2 x 2 in (50 x 50 mm) ANSI/DIN		
Pump Casing	Ductile iron <ul style="list-style-type: none"> <li>• Twice as strong as CI</li> <li>• Higher bursting pressure than CI</li> <li>• Longer wear life than CI</li> </ul>	Impeller	Open type, two vane Material: cast steel Max Solids Sphere: 1.5 in (38.1 mm) <ul style="list-style-type: none"> <li>• Less brittle than Ductile Iron</li> </ul>
Operating Pressure	Maximum 150 psi (1034 kPa)	Impeller Shaft	17-4PH* SST <ul style="list-style-type: none"> <li>• High strength</li> <li>• Corrosion resistance</li> </ul>
Thrust Bearing	Open single ball	Bearing/Seal Cavity Lubrication	SAE No. 30 oil
Flanges	125# Cast iron ANSI or DIN	Gaskets	Buna-N, compressed synthetic fibers, vegetable fiber, PTFE, cork, and rubber
Wear Plate	Replaceable Carbon steel	O-Rings	Buna-N
Cover Plate	Removable/adjustable Ductile iron	Hardware	Plated steel/SST
Flap Valve	Neoprene with steel reinforcing ring	Pressure Release Valve	Brass
Bearing Housing	Ductile iron (wetted) Cast iron (inner)	Oil Level Sight Gauges	Bearing and seal cavity
Seal Plate	Cast iron	Net Weight	330 lbs (150 kg)
Shaft Sleeve	17-4PH* SST	Shipping Weight	350 lbs (160 kg)
Radial Bearing	Open single ball	Export Crate	25 ft <sup>3</sup> (0.7 m <sup>3</sup> )

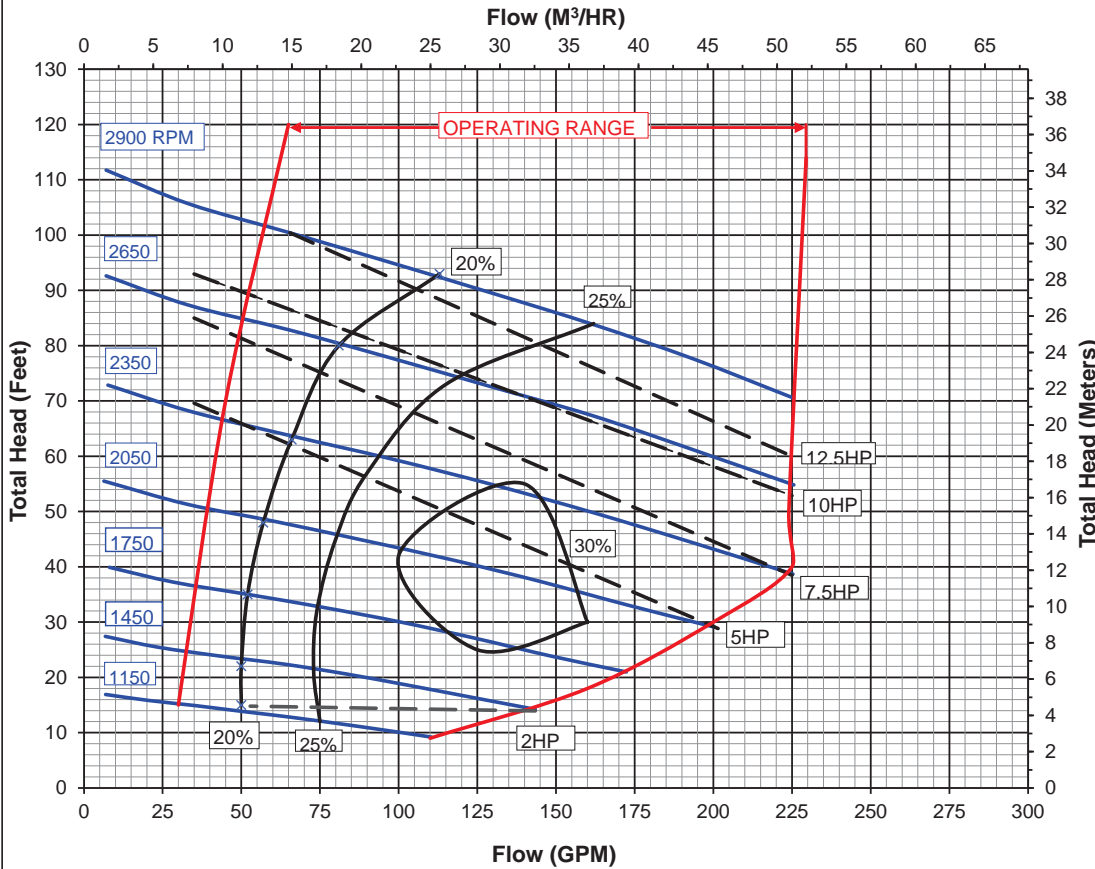
# WSP™ Self-Primer Pump

Solids Handling Self-Primer Pumps

2 x 2 in. (50 x 50 mm) curve



440 W. 800 S. Salt Lake City, Utah 84110  
Phone: (801) 359-8731 Fax: (801) 355-9303



Suction: 2"  
Discharge: 2"  
Impeller Diameter: 6.38"  
Max. Solid Sphere: 1.50"

REPRIMING LIFTS	
RPM	FEET
2900 - 1750	24
1450	19
1150	10

Determine NPSHR prior to using repriming table. Do not use available suction lifts.

### Clear Water Performance

$$BHP = \frac{GPM \times FT \times SG}{3960 \times \text{Efficiency}}$$

$$KW = \frac{M^3/HR \times M \times SG}{367 \times \text{Efficiency}}$$



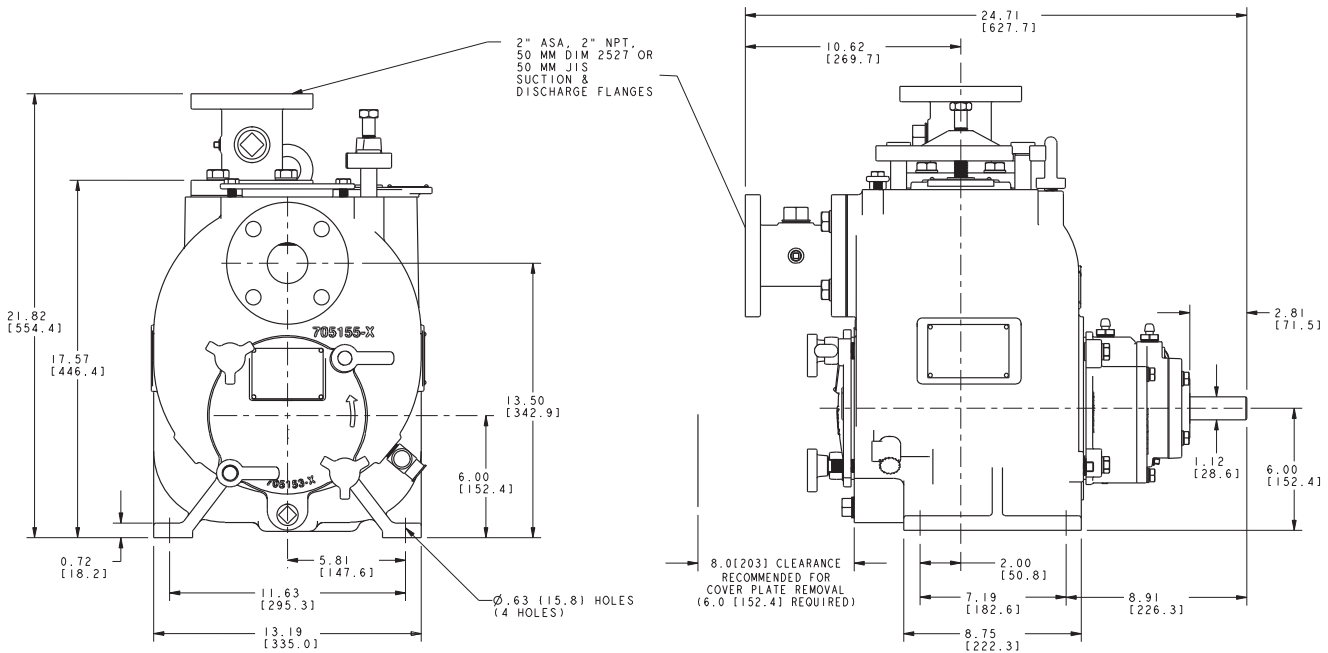
© Copyright All rights reserved 2002

Certified tests are performed using Hydraulic Institute acceptance level B.

November 2014

**RPM  
VARIABLE**

**2-WSP**



### Weir Specialty Pumps

440 West 800 South  
Salt Lake City, UT 84101-2229  
USA

Bulletin: 2-WSP Spec Sheet

Tel: 1 801 359 8731  
Fax: 1 801 530 7828  
email: info@weirsp.com  
www.weirsp.com



**281-612-WRXS (9797)**

Excellent  
Engineering  
Solutions

